

PRIME RESIDENTIAL  
REAL ESTATE

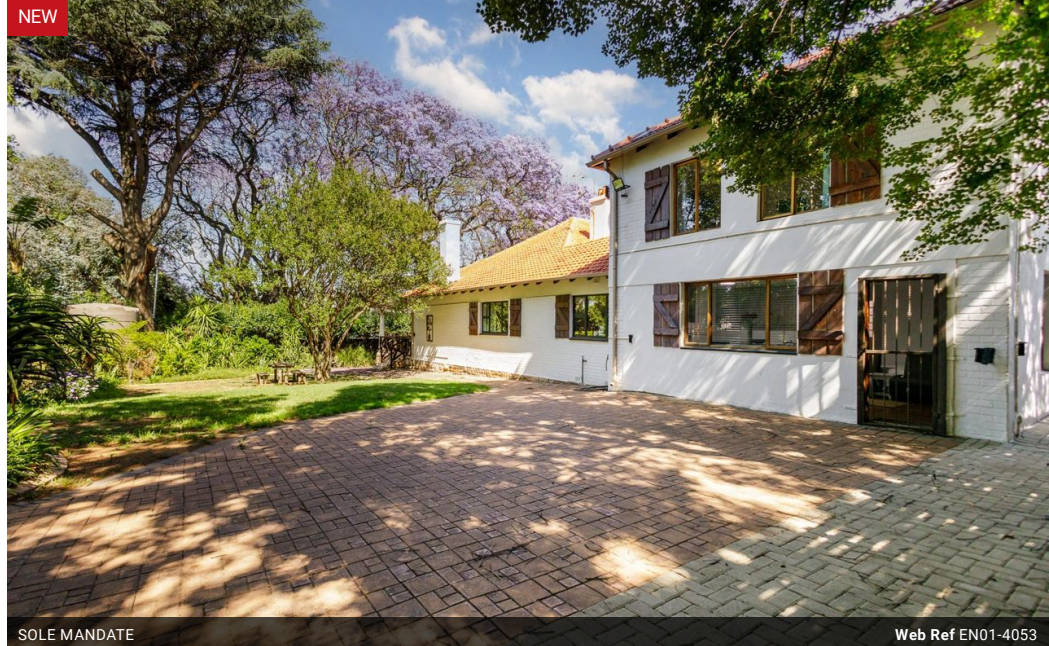


**Ronald Ennik**  
083 273 3707  
theparks@ennikestates.co.za

Contact Johannesburg (Ennik Estates)

011 788 0688

65 Worcester Road  
Parkwood  
2193  
Johannesburg




SOLE MANDATE

Web Ref EN01-4053



**R6,700,000**

 3  3.5

**Monthly Bond Repayment** R70,300.15

Calculated over 20 years at 11.25% with no deposit.

**Transfer Costs** R619,645.00 **Bond Costs** R80,082.50

These calculations are only a guide. Please ask your conveyancer for exact calculations.

**Monthly Rates** R5,324

Completely Renovated, Generous Income Opportunity.

Off the grid for water (borehole) and partly for electricity. Two full cottages.

Completely renovated to include the best finishes and features. This very comfortable home radiates warmth with wood floors, doors and windows. The house and the two substantial double storey cottages have their own private access. Gas heating, gas stoves and gas geysers (Rennai)

A modern farm-style home perfect for a contemporary family lifestyle where the large, long veranda allows for long lazy afternoons enjoying whatever the highveld weather dishes up. This veranda is so versatile, perfect for late evening dinners, weekend braais and lavish entertaining on a grand or small scale. The spacious open plan lounge & dining room forms the link between the family room, kitchen and outside terrace.  
3 Spacious bedrooms, all...

## Features

**Pets Allowed** Yes

**Interior**  
Bedrooms 3  
Bathrooms 3.5  
Recep. Rooms 2  
Furnished No

**Exterior**  
Carports / Parkings 12  
Security Yes  
Dom. Accom. 1  
Pool Yes  
Views No

**Sizes**  
Floor Size 500m<sup>2</sup>  
Land Size 1,830m<sup>2</sup>

## Extras

WiFi/ Fibre, 2x Full Cottages, Wooden Cabinetry, Granite Counter-Tops, Prep Bowl, Smeg Gas Stove & Oven, Extractor, 5 Plate Electric Hob, Double Sink, Scullery, Space for Appliances, 2x Wood Burning Fireplace, Bay Window, Covered Patio, Feature Light Fittings, Wooden Floors, Tiled Floors, Carpet Floors, Concrete Screed Floors, Feature Marble Tiled Floors & Walls, Aluminum Sliding Doors, Aluminum Window Frames, Landscaped Garden, Balcony, Fenced Swimming Pool, Water Tank, Automated Entry Gate, Trellidor Security Gates Throughout, Alarm System, Electric Fence, Exterior & Interior Beams, Egoli Gas

