

PRIME RESIDENTIAL
REAL ESTATE


Debra Mann
083 666 5087
debra.mann@ennikestates.co.za

Contact Johannesburg (Ennik Estates)

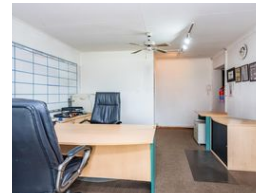
011 788 0688

65 Worcester Road
Parkwood
2193
Johannesburg



SOLE MANDATE

Web Ref EN01-4568



R2,990,000

3 2 2

Monthly Bond Repayment R30,862.43
Calculated over 20 years at 11% with no deposit.

Transfer Costs R159,255.00 **Bond Costs** R42,185.00
These calculations are only a guide. Please ask your conveyancer for exact calculations.

Monthly Rates R1,415

Prime Ferndale Location - Ready for Your Business

Exceptional Opportunity for Office Use

Located in the heart of Ferndale, this property has been rezoned to "special" for office use, offering a great opportunity for businesses looking for a visible and accessible spot. It's a versatile space, suitable for a range of businesses, from medical practices and professional services like lawyers or accountants, to creative agencies.

The adaptable layout means you can configure the space to fit your specific needs. Think about how you could use the space – whether you need individual offices, open collaboration areas, or a combination of both. While you might want to make some changes to fully customize it for your industry, the advantages of this Ferndale prominent and accessible location are clear.

This property offers the potential to tailor a workspace...

Features

Pets Allowed Yes

Interior

Bedrooms	3
Bathrooms	2
Recep. Rooms	2
Studies	1
Furnished	No

Exterior

Garages	2
Security	No
Pool	No
Views	No

Sizes

Land Size	2,079m ²
-----------	---------------------

Extras

Tiled Floors, Steel Window Frames, Lounge used as office, Dining Room used as office, Wood Cabinetry, Laminate Counter-Tops, Double Sink, Spcae for 2x Appliances, Space for Fridge

