

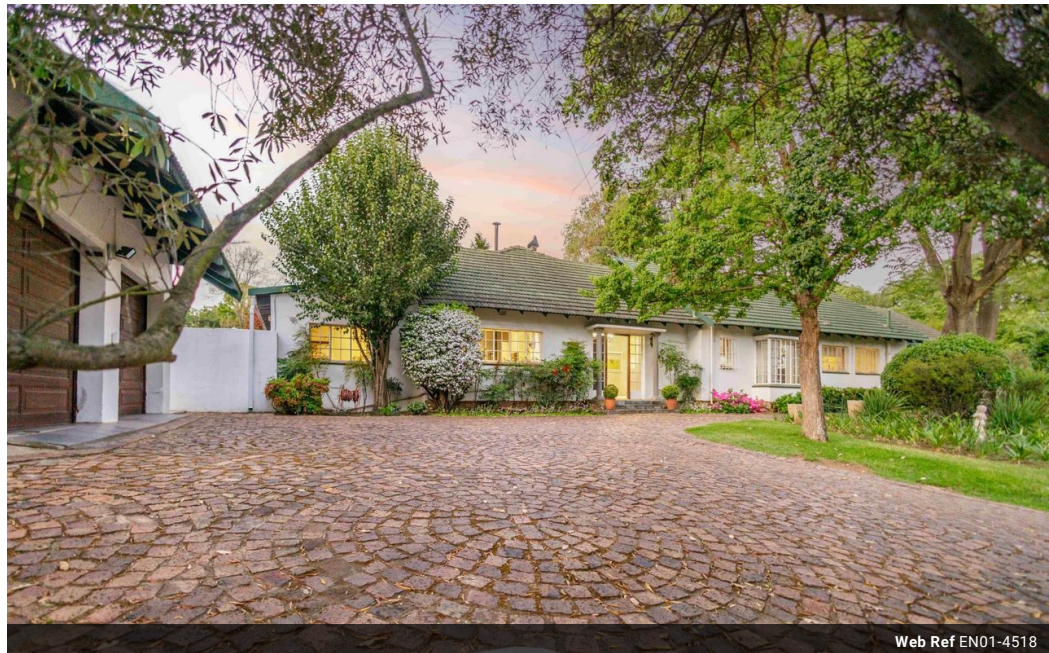
PRIME RESIDENTIAL
REAL ESTATE


Bev Short
 081 270 7196
 bev.short@ennikestates.co.za

Contact Johannesburg (Ennik Estates)

011 788 0688

65 Worcester Road
 Parkwood
 2193
 Johannesburg



Web Ref EN01-4518



R4,500,000

 4
  2
  2

Monthly Bond Repayment R46,448.48
 Calculated over 20 years at 11% with no deposit.

Transfer Costs R343,009.00 **Bond Costs** R57,265.00
 These calculations are only a guide. Please ask your conveyancer for exact calculations.

Monthly Rates R2,910

Luxury Country Charm in the Heart of Bryanston East.

Nestled in a lush, established garden, this exquisite single-story home offers a rare blend of English country charm and modern sophistication. Perfectly situated in the exclusive Bryanston East area, this property boasts convenience, security, and serenity.

Elegant Entrance & Spacious Interiors

As you meander through the beautifully manicured garden, a cobblestone pathway leads you to the spacious entrance hall. The formal lounge features a gas fireplace, while the open-plan kitchen, dining room, and family room offer a combustion fireplace and flow seamlessly onto a covered patio with a built-in wood braai.

Gourmet Kitchen & Secluded Garden Oasis

The fully equipped kitchen features a veggie prep bowl, 4-plate gas hob, and separate scullery. The patio overlooks a tranquil garden with a water...

Features

Interior

Bedrooms	4
Bathrooms	2
Recep. Rooms	3
Studies	1
Furnished	No

Exterior

Garages	2
Carports / Parkings	5
Security	Yes
Dom. Accom.	1
Pool	Yes
Views	No

Sizes

Floor Size	400m ²
Land Size	2,445m ²

Extras

4-Plate Gas Stove, Convection Oven, 2x Refrigerator, 5KVA Inverter, Manual Irrigation System