

PRIME RESIDENTIAL  
REAL ESTATE



**Bev Short**  
081 270 7196  
bev.short@ennikestates.co.za

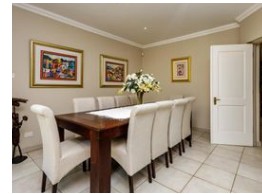
Contact Johannesburg (Ennik Estates)

011 788 0688

65 Worcester Road  
Parkwood  
2193  
Johannesburg



Web Ref EN01-4429



**R3,490,000**

 5  3.5  3

**Monthly Bond Repayment** R36,023.37  
Calculated over 20 years at 11% with no deposit.

**Transfer Costs** R220,614.00 **Bond Costs** R47,840.00  
These calculations are only a guide. Please ask your conveyancer for exact calculations.

**Monthly Levy** R420 **Monthly Rates** R4,237

### Convenience of the City – Feel of the Country

Serious Seller Will Consider All Written Offers

Convenient living in a quiet, peaceful environment. Live safely, situated in a secure gated estate within a 24-hour guarded boom area. Ideal for multigenerational living, blended families, or families with young adults!

On the centre level: This unique three-level family home boasts: Two well-sized bedrooms with a shared full en-suite bathroom. The central, spacious formal living room, dining room and kitchen inter-lead seamlessly. A spacious guest suite boasts an en-suite shower and private entrance. The well-equipped granite kitchen features a double AEG oven, glass-top hob, walk-in pantry, and laundry area plumbed for 3 appliances. The kitchen opens to a private courtyard with a direct entrance from the road and a well-maintained staff accommodation...

### Features

**Pets Allowed** Yes

#### Interior

Bedrooms	5
Bathrooms	3.5
Recep. Rooms	3
Studies	1
Furnished	Yes

#### Exterior

Garages	3
Carports / Parkings	2
Security	Yes
Dom. Accom.	1
Pool	No
Views	No

#### Sizes

Land Size	688m <sup>2</sup>
-----------	-------------------

#### Extras

Furnished (option), Double AEG Oven, Glass Top, Space for 3x Appliances, Fibre/Wifi, Triple Storey, Astro-Turf, Caesar Stone Counter-Tops, Large Scullery and Pantry, 2x Pyjama Lounge, 2x Airconditioner, Solar Geyser x2