

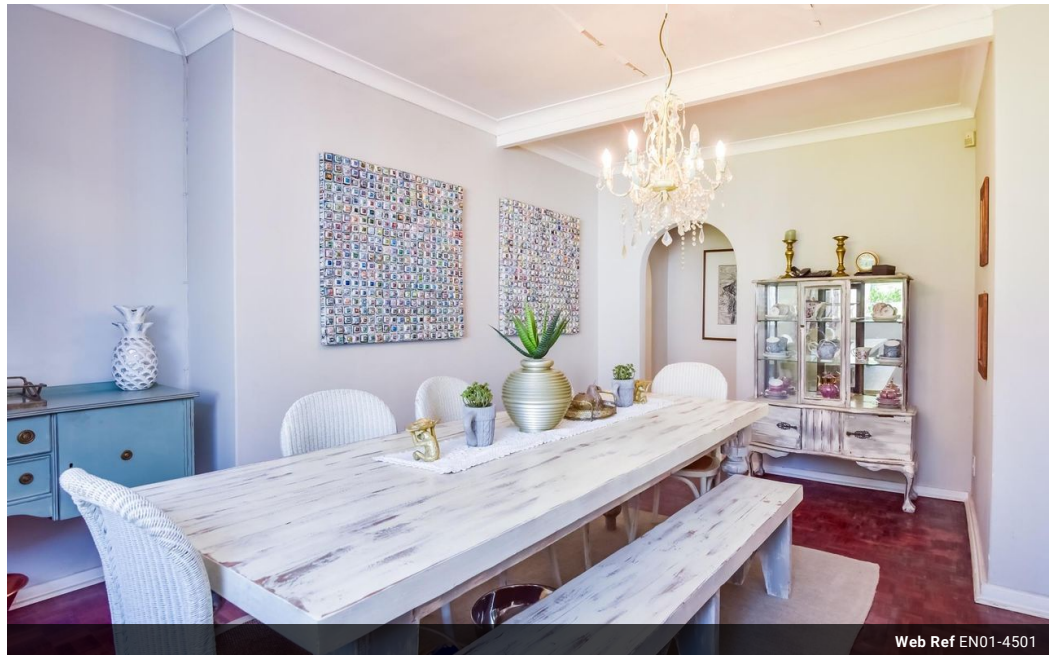
PRIME RESIDENTIAL
REAL ESTATE


Bev Short
081 270 7196
bev.short@ennikestates.co.za

Contact Johannesburg (Ennik Estates)

011 788 0688

65 Worcester Road
Parkwood
2193
Johannesburg



Web Ref EN01-4501



R4,400,000

 4  3  2

Monthly Bond Repayment R45,416.29
Calculated over 20 years at 11% with no deposit.

Transfer Costs R329,841.00 **Bond Costs** R55,380.00
These calculations are only a guide. Please ask your conveyancer for exact calculations.

Monthly Rates R4,500

Opportunity Knocks in Bryanston East

Situated in sought after boomed area in Bryanston East. A chance to create your dream home in a secure, tranquil location surrounded by half an acre of land well back from the road. Original features, like the parquet flooring, provide a foundation of the timeless aesthetics. Just waiting for you to add the finishing touch to make this house with cottage and ample accommodation your own.

Leading from the entrance hall, is the bright and airy lounge flowing onto the patio, garden and pool area, meeting with the sliders from the family room, where you can either stepdown to the kiddies play-room or into the cozy sunroom, the perfect nook for relaxing while you enjoy the view of the expansive garden.

The large, well-positioned kitchen is equipped with a gas hob, double oven and lots of cupboard space, offering a...

Features

Pets Allowed Yes

Interior

Bedrooms	4
Bathrooms	3
Recep. Rooms	4
Studies	1
Furnished	No

Exterior

Garages	2
Carports / Parkings	4
Security	No
Dom. Accom.	1
Pool	Yes
Views	No

Sizes

Land Size	2,380m ²
-----------	---------------------

Extras

Boundry Wall, Fibre, Children Playroom