

PRIME RESIDENTIAL
REAL ESTATE


Ronald Ennik
083 273 3707
theparks@ennikestates.co.za



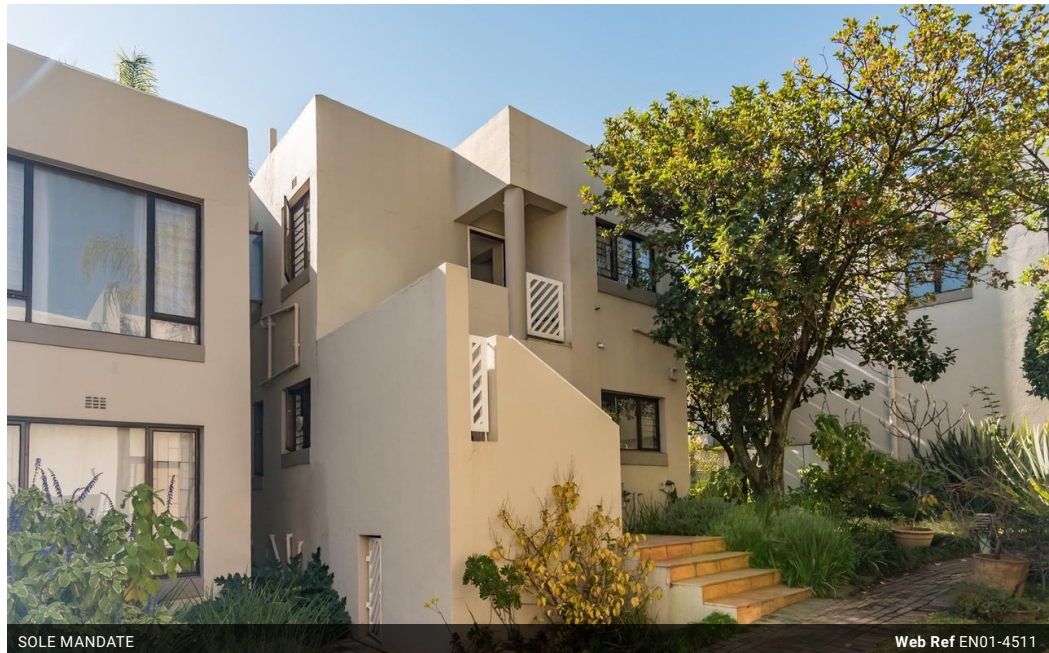
Delisile Thabethe
064 526 6193

delisile.thabethe@ennikestates.co.za

Contact **Johannesburg (Ennik Estates)**

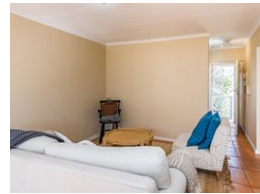
011 788 0688

65 Worcester Road
Parkwood
2193
Johannesburg

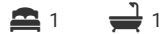


SOLE MANDATE

Web Ref EN01-4511



R895,000



Monthly Bond Repayment R9,238.09
Calculated over 20 years at 11% with no deposit.

Transfer Costs R28,244.00 **Bond Costs** R21,450.00

These calculations are only a guide. Please ask your conveyancer for exact calculations.

Monthly Levy R2,900 **Monthly Rates** R900

Urban Elegance Meets Tranquil Retreat: Prime Apartment in Johannesburg's Heart

Discover the perfect blend of urban convenience and tranquil living with this exceptional apartment, situated in the heart of Johannesburg's bustling business district. Ideal for those seeking proximity to the city's dynamic lifestyle while enjoying the peace of a secure, quiet complex, this residence offers the best of both worlds.

Located just minutes away from world-class dining, premier entertainment, and a variety of cultural landmarks, this apartment places you at the epicenter of Johannesburg's vibrant offerings. Whether you are a connoisseur of fine cuisine, a lover of the arts, or an enthusiast of city life, this location caters to every lifestyle need.

The property also benefits from excellent transport links, ensuring seamless connectivity throughout the city. With such a prime location, getting...

Features

Interior		Exterior		Sizes	
Bedrooms	1	Carports / Parkings	1	Floor Size	53m ²
Bathrooms	1	Security	Yes		
Recep. Rooms	2	Pool	Yes		
Furnished	No	Views	No		

Extras

Wifi/Fibre, Open-plan Dining Area, Wood Cabinetry, Dual Sink, Defy Appliances, Communal Garden, Carpet Floors, Aluminum Sliding Door, Burglar Bars, Security Gate, Tiled Walls, Tiled Floors, Wooden Shutters