

**PRIME RESIDENTIAL  
REAL ESTATE**


**Kevin Blacklock**  
083 260 3678  
kevin.blacklock@ennikestates.co.za



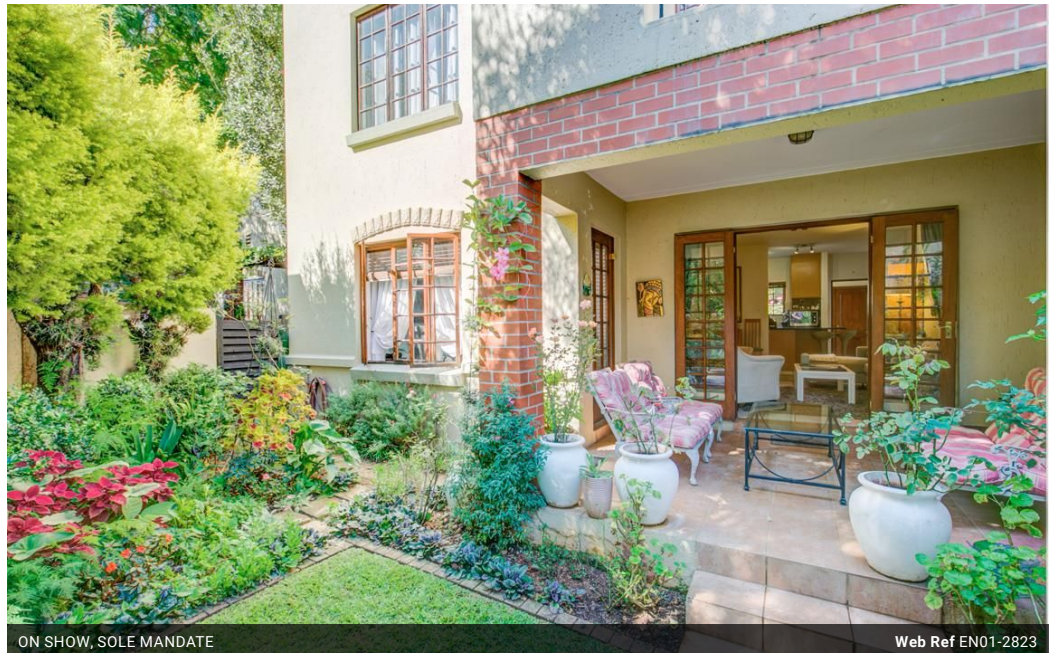
**Ewa Luckos**  
082 457 9997

ewa.luckos@ennikestates.co.za

Contact **Johannesburg (Ennik Estates)**

**011 788 0688**

65 Worcester Road  
Parkwood  
2193  
Johannesburg





ON SHOW, SOLE MANDATE

Web Ref EN01-2823



## On Show

 14:00 to 16:00

 Sunday, 24 November 2024

### Directions

Use the "Get Directions" facility provided.

# R1,195,000

 2  2

**Monthly Bond Repayment** R12,743.83

Calculated over 20 years at 11.5% with no deposit.

**Transfer Costs** R37,853.00 **Bond Costs** R30,040.50

These calculations are only a guide. Please ask your conveyancer for exact calculations.

**Monthly Levy** R3,172 **Monthly Rates** R753

## 2 Bedroom Townhouse For Sale in Paulshof

Offers from R 1 195 000.

A simply stunning garden unit in a secure and popular complex in Paulshof. Lifestyle is everything and this unit epitomizes just that!

This one-of-a-kind two bedroom, two bathroom, garden unit is in a well-established and upmarket complex with easy access to main arterial routes and amenities.

The modern kitchen has space for two appliances and it is equipped with a breakfast nook. Enjoy the open-plan living area with patio.

Additional perks include excellent security, a clubhouse, large pool, and river walks in the complex.

## Features

### Interior

Bedrooms	2
Bathrooms	2
Recep. Rooms	2
Furnished	No

### Exterior

Carports / Parkings	2
Security	Yes
Pool	No
Views	No

### Sizes

Floor Size	87m <sup>2</sup>
------------	------------------

### Extras

Pool in complex, River walkways, Childrens gym, Rose garden